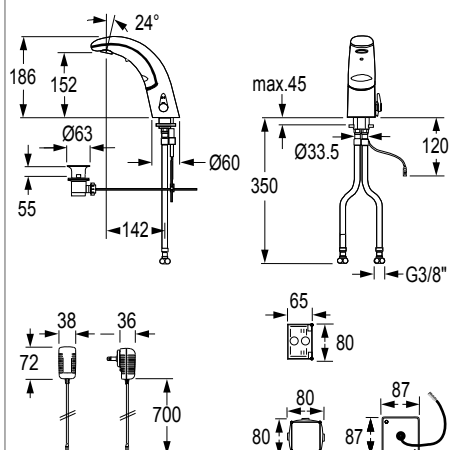


# CONTI iQ lavatory faucet A10



## iQ lavatory faucet A10, with IR sensor, with temperature-mixing, chromed

Touchless, electronically controlled lavatory faucet:

- Modular single-piece design without separate installation box, sturdy metal housing, chromed
- Dual infrared sensors (with automatic setting feature), microprocessor
- Reliable solenoid valve ROBUST (minimal level of water pressure surge) and economic aerator
- Hot and cold water supply connection with flexible high-pressure hoses
- Check valves and built-in filters
- Temperature adjustable or fixable (vandal-resistant construction)
- Adjustable hot water limitation (mechanically)
- Temporary-off (cleaning) and continuous water flow time (filling of basin) activated by Click-plus
- Continuous water flow time and hygienic flush time adjustable with function key
- Follow-up time and sensor sensitivity adjustable with function key
- 12, 24 or 48-hour hygienic flush activatable with function key
- Installation similar to conventional single-lever faucet
- Compatible with CNX and Service APP: Control of stored operational data, settings and control functions


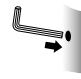




Click:	Recessed function key - without additional functions
Click-plus:	Protruding function key Click-plus (continuous-on, temporary-off)
Battery:	6 V Lithium 2 CR5 - commercial; life time up to 4 years
Mains supply:	Plug-in transformer 110-240 V 50-60 Hz / 6 V
Concealed mains supply:	flush-mounted power supply 110-240 V 50-60 Hz / 6 V including box and cover
VARIOconnect:	For single and multiple power supply and data connection (Connection CNX and Service APP - see accessories)

Operating pressure:	0,3-10 bar
Flow rate (approx.):	6 l/min / 1,6 gpm (3 bar)
Water temperature (max.):	80 °C
Aerator:	Economic aerator, CASCADE (self-cleaning)
Flexible hoses:	350 mm
Angle valve connection:	G 3/8
Built-in filters:	0,5 mm mesh size
Sensor sensitivity:	Automatic self-adapting sensor technology
Follow-up time:	1 s pre-set (adjustable with function key 0-10 s)
Continuous water flow and hygienic flush time:	2 min pre-set (adjustable with function key 0,5-20 min)
Temporary-off:	2 min (fixed)
Engineering standards:	DIN EN 200; Noise class I; P-IX 9576 / IA;CE

**Note:** When integrated into the CNX Water Management System, the CNX Converter 6 V must be ordered separately.

When using the Service APP, the BLE Converter must be ordered separately.

Only possible with mains and VARIOconnect versions.

Version		 Function key Click-plus	 Function key Click
Power supply	Drain assembly	Article number	Article number
 Battery	Without	<b>100.100.11</b>	<b>100.000.11</b>
	With	<b>100.101.11</b>	<b>100.001.11</b>
 Mains operation	Without	<b>100.110.11</b>	<b>100.010.11</b>
	With	<b>100.111.11</b>	<b>100.011.11</b>
 VARIOconnect	Without	<b>100.116.11</b>	<b>100.016.11</b>
	With	<b>100.117.11</b>	<b>100.017.11</b>
 Concealed mains power supply	Without	<b>100.160.11</b>	<b>100.060.11</b>
	With	<b>100.161.11</b>	<b>100.061.11</b>